

ENG STEEL



SinüsPanel®

TrapezPanel®

ENG STEEL CONSTRUCTION LTD

IRDEN BUILD PANEL LTD

SINUS PANEL LTD

TRAPEZE PANEL LTD

I and H Shaped Steel Profiles CATALOG

CONTACT : +905319122965

**ADRESS : H.Q: Eyüp Sultan Mahallesi Kızılay Caddesi Damatris Life Sitesi C Blok No:71 Daire: 8 Kat: 4
Sancaktepe – İstanbul / TÜRKİYE**

WEBSITE : <https://www.engsteelcons.com/>

HEA / HEB Profile

Length: It is produced from 4 m to - 18 m.

Dimensions : Euronorm 53-62 ASTM A6 /A 6M - 07

Tolerances: EN 10034 ASTM A 6/A 6M - 07

Although H-section structural profiles are used especially in the construction of steel construction buildings, they are also used in reinforced concrete structures for the purpose of supporting the structure. In low and high altitude constructions, it is used in all areas of the construction that makes up the building, as well as in agricultural machinery, automotive, basic construction and industrial applications.

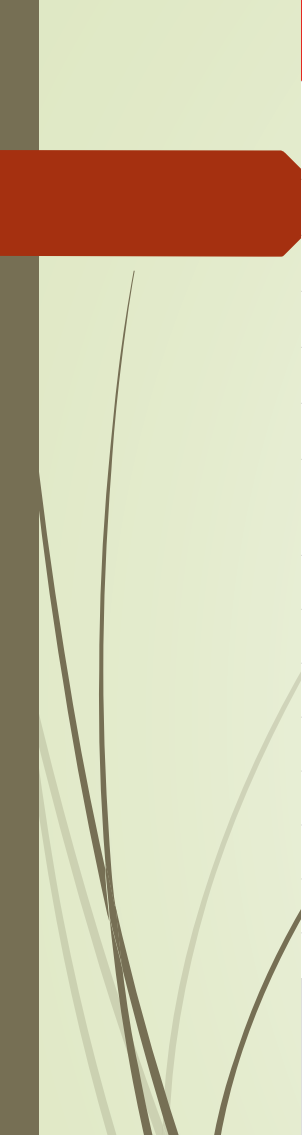


ENG STEEL



SinüsPanel®

TrapezPanel®

	HEA/HEB Beam Sizes(mm)															
		G kg/m	h mm	b mm	tw mm	tf mm	r mm	A cm2								
	HEA 100	16,7	96	100	5,0	8,0	12	21,24	HEA 340	105,0	330	300	9,5	16,5	27	133,50
	HEB 100	20,4	100	100	6,0	10,0	12	26,04	HEB 340	134,0	340	300	12,0	21,5	27	170,90
	HEA 120	19,9	114	120	5,0	8,0	12	25,34	HEA 360	112,0	350	300	10,0	17,5	27	142,80
	HEB 120	26,7	120	120	6,5	11,0	12	34,01	HEB 360	142,0	360	300	12,5	22,5	27	180,60
	HEA 140	24,7	133	140	5,5	8,5	12	31,42	HEA 400	125,0	390	300	11,0	19,0	27	159,00
	HEB 140	33,7	140	140	7,0	12,0	12	42,96	HEB 400	155,0	400	300	13,5	24,0	27	197,80
	HEA 160	30,4	152	160	6,0	9,0	15	31,42	HEB 400	155,0	400	300	13,5	24,0	27	197,80
	HEB 160	42,6	160	160	8,0	13,0	15	54,25	HEA 450	140,0	440	300	11,5	21,0	27	178,00
	HEA 180	35,5	171	180	6,0	9,5	15	45,25	HEB 450	171,0	450	300	14,0	26,0	27	218,00
	HEB 180	51,2	180	180	8,5	14,0	15	65,25	HEA 500	155,0	490	300	12,0	23,0	27	197,50
	HEA 200	42,3	190	200	6,5	10,0	18	53,83	HEB 500	187,0	500	300	14,5	28,0	27	238,50
	HEB 200	61,3	200	200	9,0	15,0	18	78,08	HEA 550	166,0	540	300	12,5	24,0	27	211,80
	HEA 220	50,5	210	220	7,0	11,0	18	64,34	HEB 550	199,0	550	300	15,0	29,0	27	254,10
	HEB 220	71,5	220	220	9,5	16,0	18	91,04	HEA 600	178,0	590	300	13,0	25,0	27	226,50
	HEA 240	60,3	230	240	7,5	12,0	21	76,84	HEB 600	212,0	600	300	15,5	30,0	27	270,00
	HEB 240	83,2	240	240	10,0	17,0	21	106,00								
	HEA 260	68,2	250	260	7,5	12,5	24	86,62								
	HEB 260	93,0	260	260	10,0	17,5	24	118,40								
	HEA 280	76,4	270	280	8,0	13,0	24	97,26								
	HEB 280	103,0	280	280	10,5	18,0	24	131,40								
	HEA 300	88,0	290	300	8,5	14,0	27	112,50								
	HEB 300	117,0	300	300	11,0	19,0	27	149,10								
	HEA 320	97,6	310	300	9,0	15,5	27	124,40								
	HEB 320	127,0	320	300	11,5	20,5	27	161,30								

ENG STEEL



SinüsPanel®

TrapezPanel®

W Profile

Length: It is produced from 4 m to - 18 m.

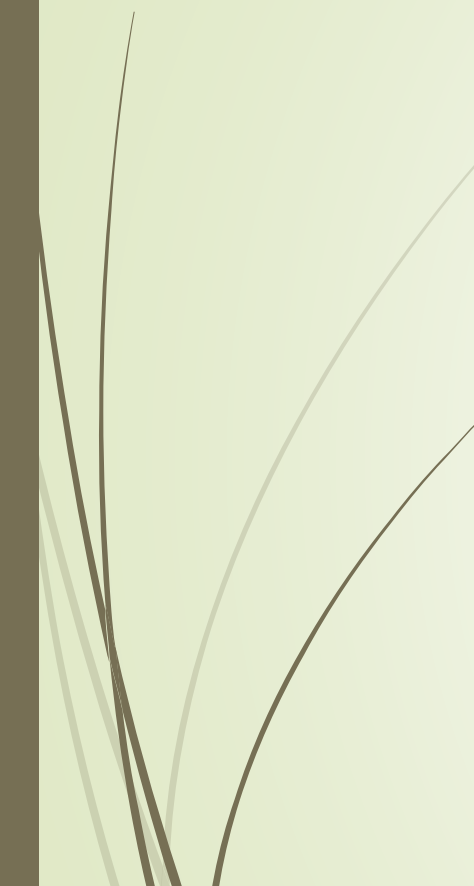
Dimensions : ASTM A6 /A 6M - 07

Tolerances : ASTM A 6/A 6M - 07

W Profiles are used especially in the construction of solar energy systems and steel construction buildings, and they are also used in reinforced concrete structures for the purpose of supporting the structure.

Project-specific machining and welded manufacturing of W profiles used in carrier systems in solar energy systems constructions are made, and they can be delivered in accordance with the project with hot-dip galvanized coating at the desired coating thickness.





ENG STEEL

SinüsPanel®

TrapezPanel®

W Profile Sizes							
Imperial (inch)	Size (mm)	G kg/m	A mm	b mm	h mm	tw mm	tf mm
W 6x4x7	W 150x100x10.4	10,4	7,6	99,2	147,1	3,4	4,1
W 6x4x7,75	W 150x100x11.5	11,5	12,3	99,6	147,8	3,8	4,5
W 6x4x8,5	W 150x100x12.6	12,6	15,9	100,1	148,1	4,3	5,0
W 6x4x9	W 150x100x13.4	13,4	17,3	100,1	150,0	4,3	5,5
W 6x4x10,4	W 150x100x15.5	15,5	19,6	100,8	151,4	5,1	6,3
W 6x4x12	W 150x100x17.9	17,9	22,9	101,6	153,2	5,8	7,1
W 6x4x16	W 150x100x23.8	23,8	30,6	102,4	159,5	6,6	10,3
W 8x4x10	W 200x100x14.9	14,9	19,1	100,0	200,0	4,3	5,2
W 8x4x13	W 200x100x19.3	19,3	24,8	102,0	203,0	5,8	6,5
W 8x4x15	W 200x100x22.5	22,5	28,6	102,0	206,0	6,2	8,0
W 8x5,25x14	W 200x130x21.4	21,4	27,2	134,0	203,0	5,0	6,4
W 8x5,25x18	W 200x130x26.6	26,6	33,9	133,0	207,0	5,8	8,4
W 8x5,25x21	W 210x130x31.3	31,3	40,0	134,0	210,0	6,4	10,2

IPE Profile

Length: It is produced from 4 m to - 18 m.

Dimensions: Mill Standard

Tolerances : EN 10034

IPE profiles, defined as the European Standard Universal Beam Profile with Parallel Flange, are designed in parallel form with flange areas.

Although these profiles are the basic needs of the building/construction sector, they are frequently used in the basic construction, infrastructure and machinery manufacturing sectors.

At the same time, it is possible to produce light series IPE-A, IPE-AA, IPE-AAA and IPE-AAAA, which are special for areas that need lightening in construction design.

With its wide product range and qualities, customer demands are responded to quickly.



ENG STEEL



SinüsPanel®

TrapezPanel®

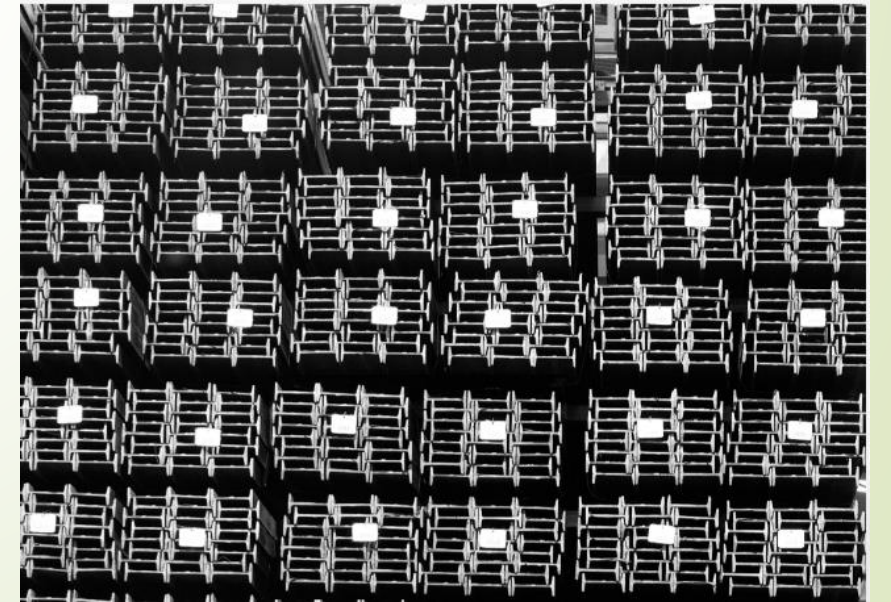
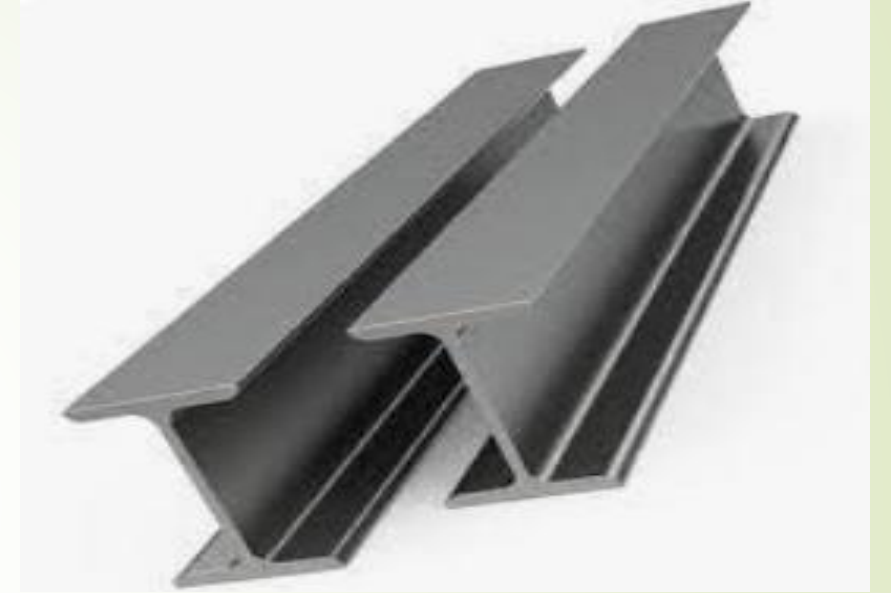
NPI Profile

Length: It is produced from 4 m to - 18 m.

Dimensions: DIN 10025

Tolerances : EN 10024

IPN profiles, defined as European Standard Beam Profile, are designed with conical flange areas. Although these profiles are the basic needs of the building/construction sector, they are frequently used in the basic construction, infrastructure and machinery manufacturing sectors. Profiles that can be produced in a wide range of quality and cross-sections are offered to our customers with short delivery times.



IPN Beam Sizes(mm)

	G kg/m	h mm	b mm	tw mm	tf mm	r1 mm	r2 mm	A cm2
IPN 80	5,9	80	42	3.9	5.9	3,9	2,3	7,6
IPN 100	8,3	100	50	4.5	6.8	4,5	2,7	10.6
IPN 120	11,1	120	58	5,1	7,7	5,1	3,1	14,2
IPN 140	14,3	140	66	5,7	8,6	5,7	3,4	18,2
IPN 160	17,9	160	74	6,3	9,5	6,3	3,8	22,8
IPN 180	21,9	180	82	6,9	10,4	6,9	4,1	27,9
IPN 200	26,2	200	90	7,5	11,3	7,5	4,5	33,4
IPN 220	31,1	220	98	8,1	12,2	8,1	4,9	39,5
IPN 240	36,2	240	106	8,7	13,1	8,7	5,2	46,1
IPN 260	41,9	260	113	9,4	14,1	9,4	5,6	53,3
IPN 280	47,9	280	119	10,1	15,2	10,1	6,1	61,0
IPN 300	54,2	300	125	10,8	16,2	10,8	6,5	69,0

ENG STEEL



SinüsPanel®

TrapezPanel®



ENG STEEL



SinüsPanel®

TrapezPanel®



ENG STEEL



SinüsPanel®

TrapezPanel®



THANK YOU

***IF YOU WANT US TO MAKE YOUR PROJECTS THE FASTEST AND
HIGHEST QUALITY, PLEASE CONTACT US***

- **EXPORT : +905319122965 - +905332056592**
- **ADRESS : H.Q: Eyüp Sultan Mahallesi Kızılay Caddesi Damatris Life Sitesi C Blok No:71 Daire: 8
Kat: 4 Sancaktepe – İstanbul / TÜRKİYE**
- **WEBSITE : <https://www.engsteelcons.com/>**